

Main Street Reconstruction

Public Information Meeting #1
May 3, 2022



Who to **CONTACT**



Owner: City of Cedar Falls

Project Contact
Luke Andreasen, Principal Engineer

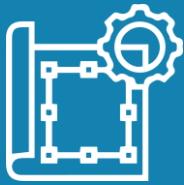
(319) 268-5165
luke.andreasen@cedarfalls.com



Design Engineer: Foth

Contact
Aaron Moniza, Project Manager

(319) 297-2073
aaron.moniza@foth.com



Project
Overview



Project
Schedule



Frequently Asked
Questions

Project **GOALS**



Improve pavement condition and lower ongoing operational costs



Enhance safety for all modes of traffic



Provide bicycle and pedestrian mobility

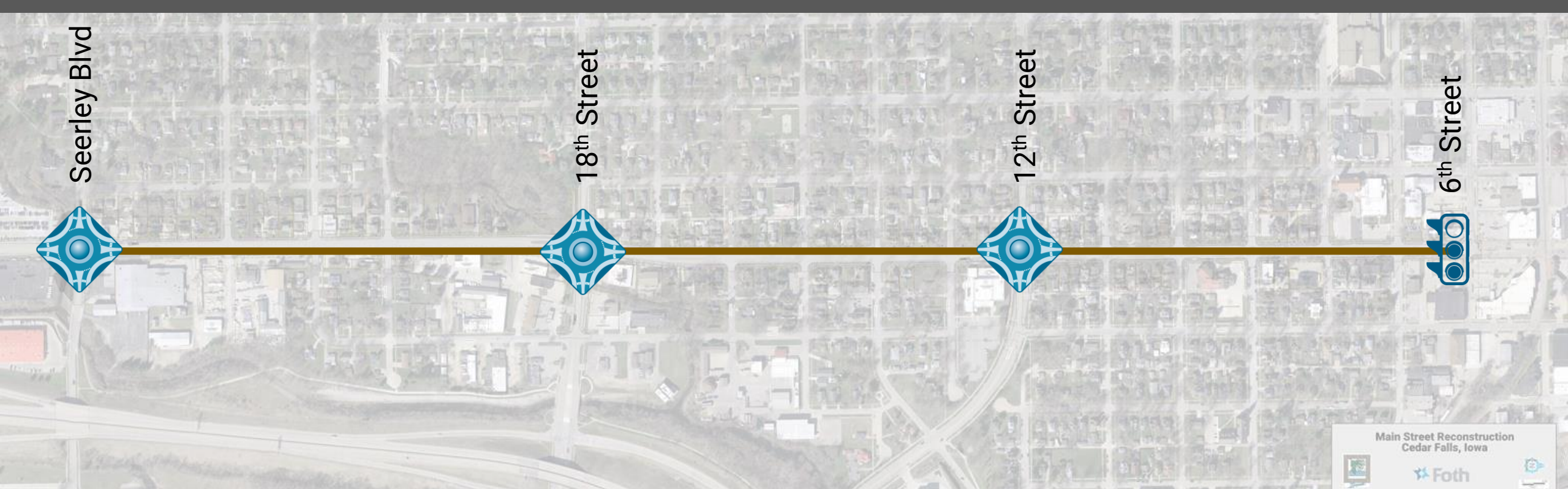


Improve traffic flow



Support economic growth and revitalization

Project **MAP**



Seerley Blvd

18th Street

12th Street

6th Street

Main Street Reconstruction
Cedar Falls, Iowa



Project **OVERVIEW**



New Concrete
Pavement



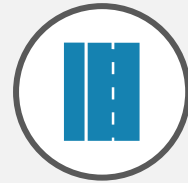
On-Street
Bike Lanes



Landscaping and
Street Trees



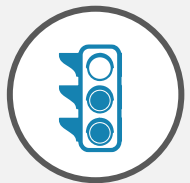
Roundabouts at
Seerley, 18th, and 12th



Sidewalks



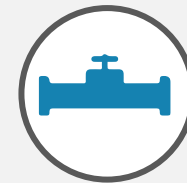
Upgrades to Storm
and Sanitary Sewers



Traffic Signal
at 6th

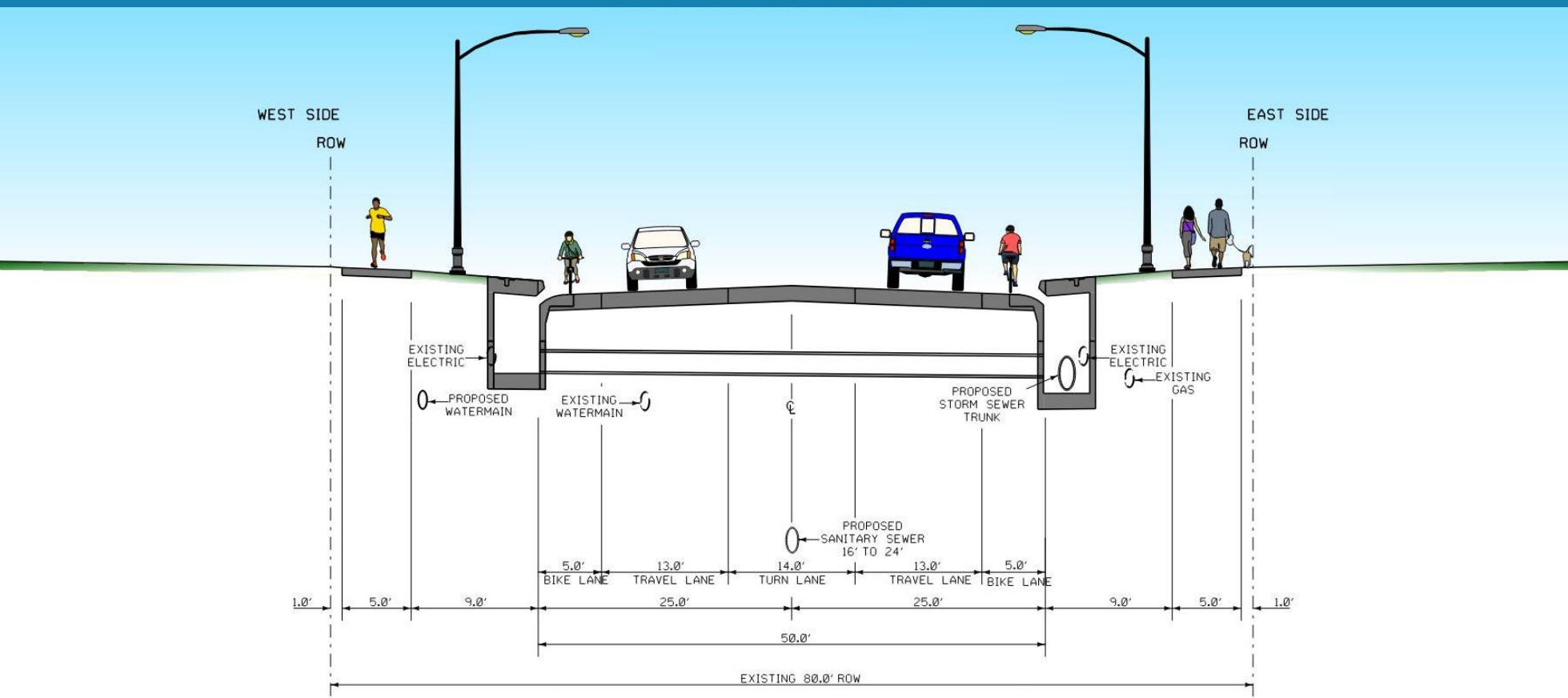


Lighting



Water Main
Upgrades

Planned Improvements



Main Street
Typical Section

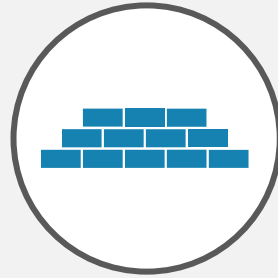
Design Elements



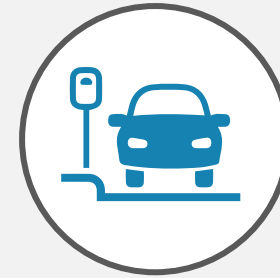
New box culvert
at Seerley



Designated bus
stops with
shelters



Retaining
walls



On-street parking
(Sundays only,
designated areas)



Mid-block
crossing

2021

2022

2023-2025



FIELD DATA COLLECTION



PRELIMINARY DESIGN



ENVIRONMENTAL



RIGHT-OF-WAY ACQUISITION



FINAL DESIGN



FINAL PLANS SUBMITTED TO IOWA DOT



PROJECT LETTING



PUBLIC INFORMATIONAL MEETINGS



PRIVATE UTILITY RELOCATIONS

CONSTRUCTION

Frequently Asked Questions

What is the width of the sidewalk? Do I have to clear snow?

5 feet. Yes.

Do I have to clear snow from the sidewalk if its width is 10 feet?

No. The City will clear snow for the areas with widths larger than 5 feet.

Does a temporary easement mean the City is taking my property?

No. A temporary easement is just land required for use of a temporary nature during the construction of the project.

I have parking spots in the temporary easement, will that mean I can't use them for the duration of the project?

You will still be able to use your parking stalls, but there may be short periods of time that the contractor would ask them to clear the area for construction.



Frequently Asked Questions

Will trees be removed for the project?

Yes, there will be some trees within the City right-of-way that will need to be removed.

Will new trees be planted?

Yes, street trees will be planted along the corridor on both sides.

Will truck traffic be able to maneuver the intersections as they do today?

Yes.

Frequently Asked Questions

How will the roundabout affect fire trucks exiting the fire station?

We have been coordinating with the fire station on this during the design process. The design will include a special preemptive signal system which will alert oncoming traffic with flashing signs to an emergency call and stop vehicles from entering the intersection.

What happens to the bike lanes at the roundabouts?

Bicyclists have two options at they approach the roundabout intersections. They can either merge on and off the wide sidewalk before and after the roundabout or bike through the roundabout using the travel lane.

What does the landscaping look like?

This is still being determined and will be shared at a future update.

Frequently Asked Questions

When exactly will construction begin?

Spring 2023, exact date to be determined.

Will traffic be maintained during construction?

In general, Yes. There may be some portions of the corridor closed during certain periods of construction. We will present more details at a future public information meeting closer to construction.

Will I have access to my property?

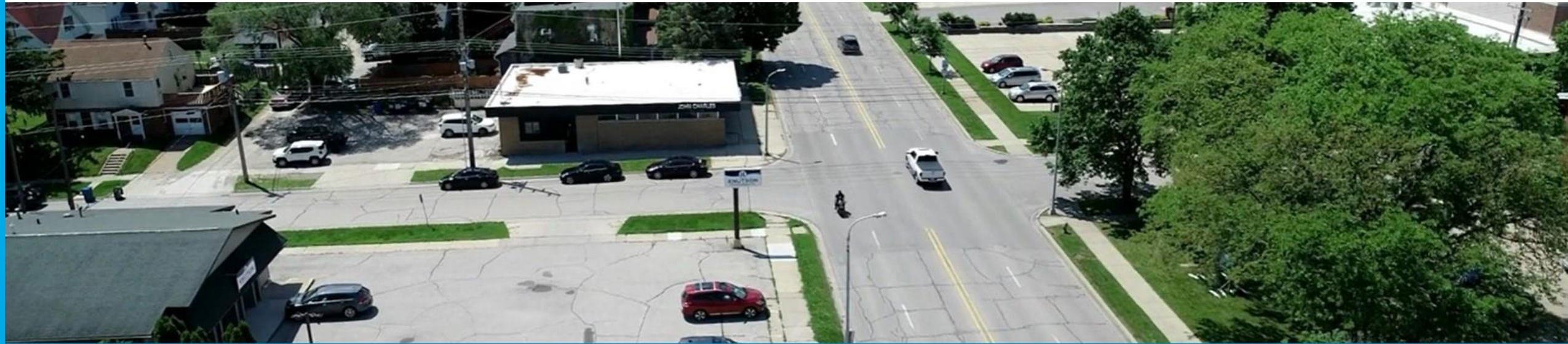
Yes, access to all businesses and residences will be maintained during construction. There may be short durations where access is interrupted during construction.

How will construction affect the fire station?

Access to the fire station will always be maintained during construction allowing for emergency response.

Mail Delivery and Trash

Q&A



City of Cedar Falls
MAIN STREET RECONSTRUCTION



www.cedarfallsmainstreetproject.com/